



EXOPAN STEEL NON-STICK FLARED BREAD MOLD

Edge rolled around a copper wire for ultimate heat distribution.

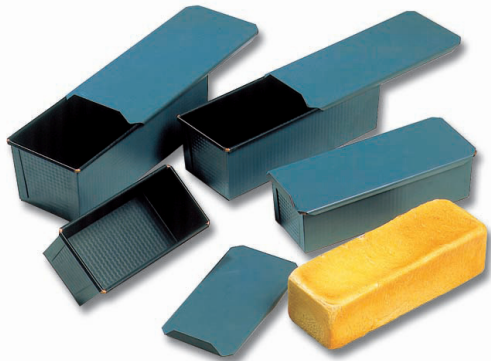
| Item # | L" | W" | H" | Capacity |
|--------|--------|-------|-------|------------|
| 331094 | 6 1/3 | 2 1/2 | 2 1/3 | 17 oz. |
| 331095 | 7 1/16 | 2 3/4 | 2 1/2 | 22 oz. |
| 331096 | 7 7/8 | 3 1/6 | 2 3/4 | 30 oz. |
| 331097 | 8 2/3 | 3 1/3 | 3 | 1 1/4 qt. |
| 331098 | 9 1/2 | 3 1/2 | 3 1/6 | 1 5/8 qt. |
| 331099 | 10 1/4 | 3 3/4 | 3 1/3 | 1 7/8 qt. |
| 331101 | 11 7/8 | 4 1/6 | 3 3/4 | 2 5/8 qts. |



EXOPAN STEEL NON-STICK BREAD MOLD

Edge rolled around a copper wire for ultimate heat distribution.

| Item # | L" | W" | H" | Capacity oz. |
|--------|--------|-------|-------|--------------|
| 331071 | 5 1/2 | 2 7/8 | 2 3/4 | 23 1/3 |
| 331072 | 6 1/3 | 3 | 3 | 30 1/2 |
| 331073 | 7 1/8 | 3 1/6 | 3 1/6 | 33 7/8 |
| 331074 | 8 | 3 1/6 | 3 1/6 | 38 7/8 |
| 331075 | 10 | 3 1/6 | 3 1/6 | 49 |
| 331076 | 12 | 3 1/6 | 3 1/6 | 59 1/6 |
| 331077 | 15 3/4 | 3 1/6 | 3 1/6 | 84 1/2 |
| 331078 | 19 2/3 | 3 1/6 | 3 1/6 | 108 1/6 |



EXOPAN STEEL NON-STICK BREAD MOLD WITH LID

Edge rolled around a copper wire for ultimate heat distribution.

| Item # | L" | W" | H" | Bottom W" | Capacity |
|--------|--------|-------|-------|-----------|-----------------|
| 340853 | 7 1/4 | 3 1/3 | 3 | 3 | 300 g - 3/4 lb. |
| 340854 | 9 3/4 | 3 1/2 | 3 1/4 | 3 | 500 g - 1 lb. |
| 340855 | 10 1/2 | 4 | 3 1/2 | 3 1/2 | 800 g 1 2/3 lb. |
| 340856 | 11 1/3 | 4 1/3 | 4 | 4 | 1 Kg - 2 lbs. |



EXOPAN STEEL NON-STICK MINI LOAF MOLD

A straight shape for baking sweet or savory mini loaves to take away or serve on a buffet. Baking mini loaves that are easy to handle and easy to eat becomes a real pleasure.

| Item # | L" | W" | H" | Capacity oz. |
|--------|-------|-------|-------|--------------|
| 331082 | 7 1/8 | 1 3/4 | 1 3/4 | 12 1/3 |



EXOPAN STEEL NON-STICK BREAD MOLD

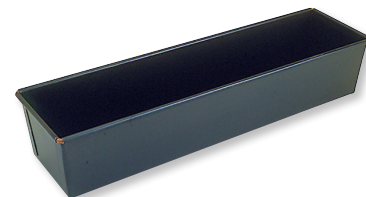
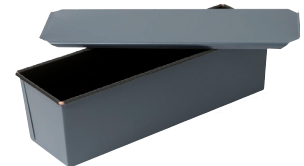
Edge rolled around a copper wire for ultimate heat distribution.

| Item # | L" | W" | H" | Item # | L" | W" | H" |
|--------|-------|----|----|--------|----|-------|----|
| 341601 | 5 1/2 | 3 | 3 | 341604 | 8 | 3 | 3 |
| 341602 | 6 | 3 | 3 | 341606 | 7 | 3 1/3 | 3 |
| 341603 | 7 | 3 | 3 | 341607 | 10 | 3 1/2 | 3 |

EXOPAN STEEL NON-STICK LONG BREAD MOLD WITH LID

Edge rolled around a copper wire for ultimate heat distribution.

| Item # | L" | W" | H" |
|--------|--------|-------|-------|
| 341641 | 15 3/4 | 4 | 4 |
| 341642 | 15 3/4 | 4 3/4 | 4 3/4 |
| 341643 | 15 3/4 | 5 1/2 | 5 1/2 |



EXOPAN STEEL NON-STICK LARGE BREAD MOLD

Wide toast pan with edge rolled around a copper wire for ultimate heat distribution.

| Item # | L" | W" | H" | Base" |
|--------|--------|----|-------|-------|
| 340961 | 15 3/4 | 4 | 3 1/8 | 3 1/2 |